

1 Hampshire Road Singapore 219428
Tel: 1800 – CALL LTA (1800-2255582) Fax: (65) 6396 1002

12 April 2019

The Seaview
41 Amber Road
Singapore 439948

Our Ref LTA/CR/C37.069.002/2328Y
DID 6396 2719

Dear Ms Rejani

CONTRACT T307 – CONSTRUCTION OF MARINE PARADE STATION & TUNNELS FOR THOMSON-EAST COAST LINE - DIAPHRAGM WALL CONSTRUCTION AT AMBER ROUNDABOUT ADJACENT TO THE CAPE CONDOMINIUM

We would like to inform you that we are currently preparing for diaphragm wall construction works. We target to commence from end April 2019 and to complete by end June 2019 (subject to site situation and weather condition).

The diaphragm wall is a reinforced concrete wall constructed underground which involves excavation of a trench which is retained with polymer slurry followed by installing steel cages and replacing the slurry with concrete to form a wall.

These works are critical and have to be carried out continuously throughout the day and/ or at night. If these activities are not carried out continuously, it may have safety concerns and cause ground movement which may affect the integrity of surrounding structures. Our contractor will implement noise mitigation measures on site to ensure that the noise levels are kept minimum.

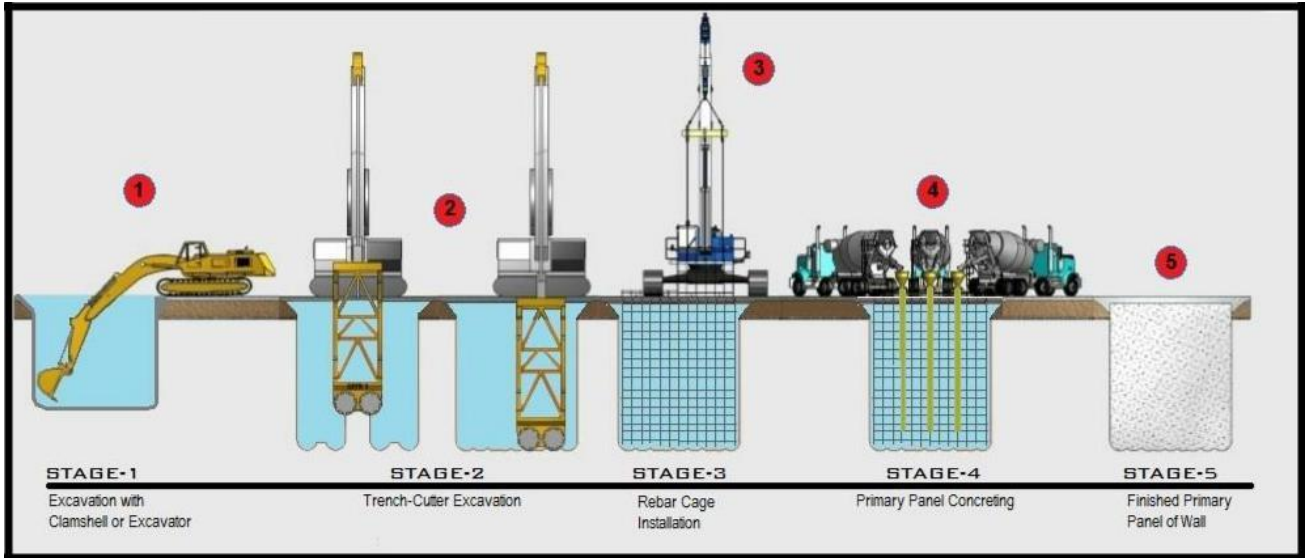
You may find out more information from the video link below,
<https://www.youtube.com/watch?v=8EJT5tcw9U>

or you can search “What's a diaphragm wall – LTA” at the YouTube search box.

Please share the above information with your neighbours, residents and stakeholders. We seek your understanding and patience during this period.

Should you require further information or if you wish to provide any feedback, please contact Samsung C&T Public Relations Officer, Ms Eileen Wong at 90184930 or me at 6396 2719 during office hours.

**CONTRACT T307 MARINE PARADE STATION AND TUNNELS FOR
THOMSON-EAST COAST LINE
DIAPHRAGM WALL CONSTRUCTION FROM
END APRIL 2019 TO END JUNE 2019**



Diaphragm Wall is a reinforced concrete wall constructed underground using slurry rotation technique which involves excavation of a trench which is retained with polymer slurry, installing steel cages and replacing slurry with concrete to form a wall. Width ranges from 1000mm-1500mm wide and depth up to 0m.

Note: Dates are purely for information and subjected to change due to weather and site situation.

Thank you and we look forward to your continuous support.

Yours sincerely,

Adrian Rakesh (Mr)
Manager, Community Partnership
Quality Service Manager Office